



---

# PARTS BOOK

---

## **KM-390BL**

Cylinder-Bed Type, 1-Needle  
Unison Feed, Horizontal Large Hook,  
Lock Stitch Machine

실린더 베드형, 1본침 본봉 총합송  
재봉기 (수평 2배혹)

## **KM-390**

Cylinder-Bed Type, 1-Needle  
Unison Feed, Horizontal Standard  
Hook, Lock Stitch Machine

실린더 베드형, 1본침 본봉 총합송  
재봉기(수평 표준혹)

**PME-110720**

# Information

## A. Parts Book 구성 Structure of Part Book

The diagram illustrates the structure of a parts book for the 'Arm, Bed & Machine Body Mechanism'. It is divided into two main sections: an exploded view of the mechanism (left) and a detailed parts list (right). The parts list includes columns for Part No., Parts No., Qty, Name, and Assembly No. The SunStar logo is visible in the top right of the parts list area.

- ①: 관계 별 고유 코드  
Unique code by mechanism
- ②: 관계 별 고유 명칭  
Unique name by mechanism
- ③: 관계도  
Explode view
- ④: Ref.No.: 파트별 고유 식별 번호  
Unique identification number by part
- ⑤: Parts No.: 고유 제품 코드  
Unique Product code

- ⑥: Note: 공지사항 표기 및 메모  
Refers to notice and memo
- ⑦: 품명: 파트의 고유 품명  
Name of Part: Unique name of parts
- ⑧: Q'ty: 파트의 수량  
The number of parts
- ⑨: Assembly no.: 조(조) 파트의 식별 번호  
Unique identification number by set part

Ex)

구분 Category	Code	비고 remarks
구 부품 Old part	01-030C-1230	
신 부품 New Part	AS-000000-00	조(조) 파트 Set parts
	GP-000000-00	기구적 파트 Instrumental parts
	EP-000000-00	전기적 파트 Electrical parts

## **Warning**

1. 조에 속한 파트는 개별 조립 시 제품의 파손 또는 재봉 불량 발생될 수 있어 해당 파트에 대한 주문 시에는 조 품목으로만 구입이 가능합니다.
  2. 본 책자는 Parts Book으로 제작되었으므로 매뉴얼로 사용 불가합니다.
  3. 사전 예고 없이 사양이 변경 될 수도 있습니다.
- 
1. The parts classified as ass'y items may cause damage to the machine or bad sewing when they are separately assembled. Hence, when they are ordered, they can be purchased as ass'y items only.
  2. This is a parts book. It cannot be used as a manual.
  3. Parts are Subject to change in Design Without Prior Notice.

# CONTENTS

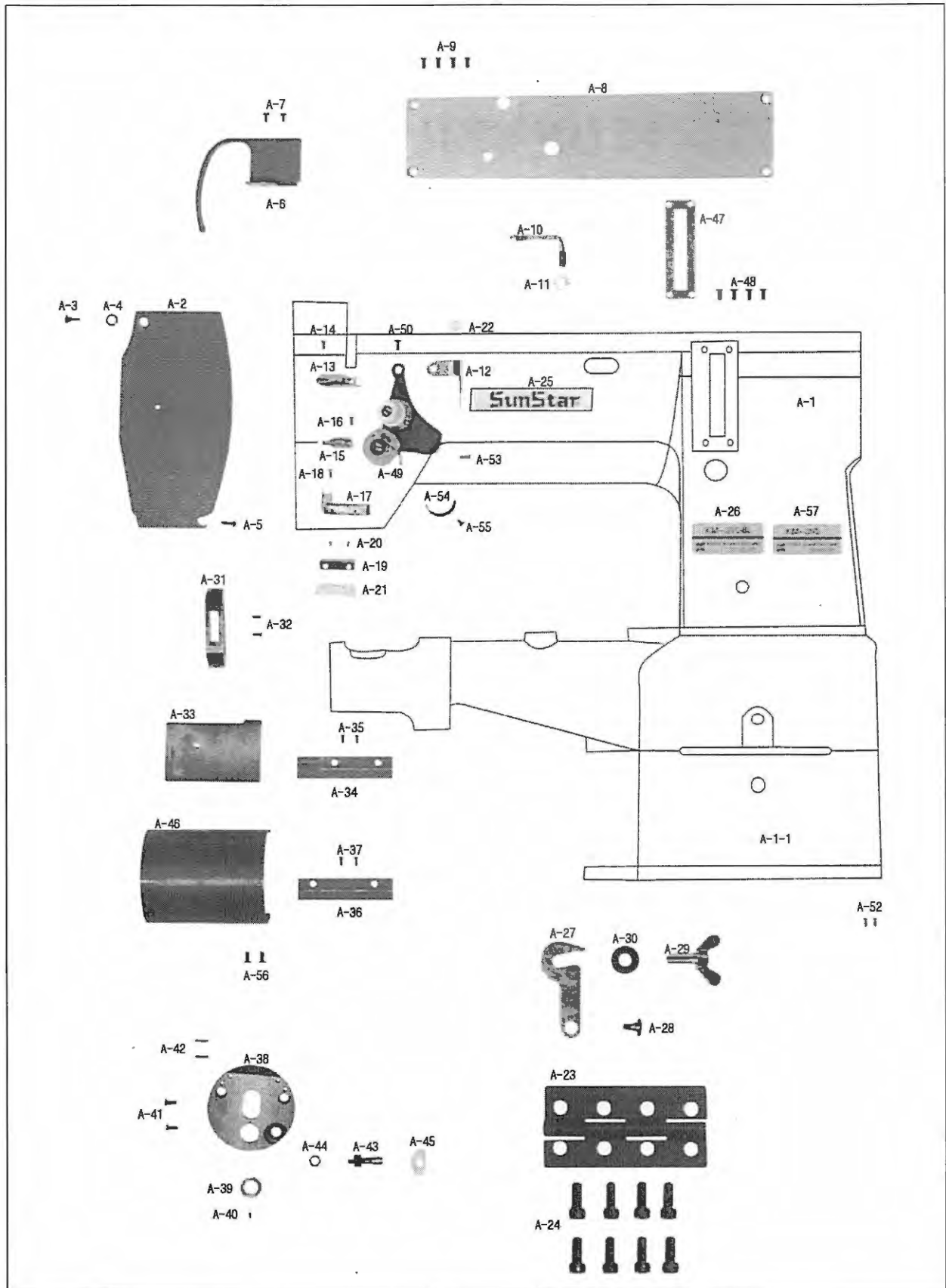
## 목 차

A	Machine Body & Thread Tension Adjusting Mechanism 외장 및 실장력 조절 관계	6
B	Upper and Lower Shaft Mechanism 상축 및 하축 관계	8
C	Needle Bar and Upper Feed Mechanism 바늘대 및 상피이드 관계	12
D	Lower Shaft and Lower Feed Mechanism 하축 및 하피이드 관계	14
E	Presser Foot and Knee Lifting Mechanism 노루발 및 무릎올림 관계	16
F	Lubrication Mechanism 급유 관계	18
G	Accessories Mechanism 액세서리 관계	20
H	Special Parts for KM-390 Mechanism KM-390 전용부품 관계	22
I	Special Parts for KM-390BLS Mechanism KM-390BLS 전용부품 관계	26
J	Gauge Parts 게이지 파트	28
	Index 인덱스	30



# Machine Body & Thread Tension Adjusting Mechanism

외장 & 실장력 조절 관계







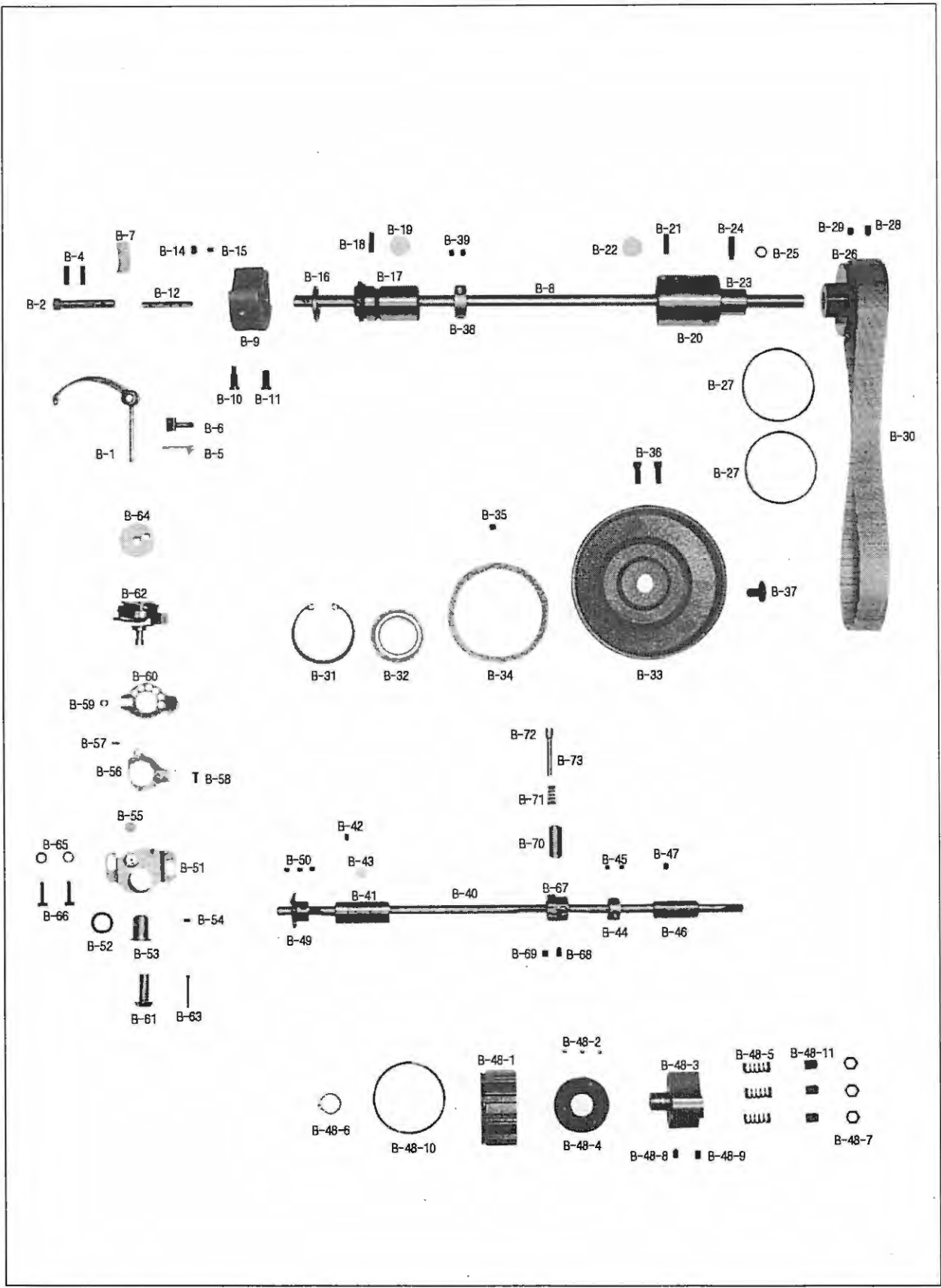
Ref. No.	Parts No.	Note	Name of Parts	품 명	Q'ty	Applied Period
A-1	01-001A-3900	BL	Arm Cylinder Bed	암, 실린더 베드	1Set	
A-1-1	CAB-BA000400	BL	Base	두부받침	1	
A-2	CMB-BJ005600		Face Plate	면판	1	
A-3	DSC-FA017200		Screw(Upper) For A-2	면판철타나사(상)	1	
A-4	DWS-CB000600		Washer(Upper) For A-2	면판와셔	1	
A-5	DSC-BA000900		Screw (9/64"n=40)	홈볼이 냄비 작은나사(9/64"n=40)	1	
A-6	CMB-LA015300		Thread Take Up Cover	실채기 카바	1	
A-7	DSC-BA000900		Screw (9/64"n=40)	홈볼이 냄비 작은나사(9/64"n=40)	2	
A-8	CMB-LA014900		Top Cover	윗뚜껑	1	
A-9	DSC-BF003600		Screw (11/64"n=40)	홈볼이 납작 작은나사(11/64"n=40)	4	
A-10	CMB-HK007600		Top Cover Thread Guide	윗실걸이	1	
A-11	DSN-AA000700		Nut (15/64"n=28)	육각너트(15/64"n=28)	1	
A-12	CMB-HK007300		Three Hole Thread Guide Plate	세구멍 실걸이	1	
A-13	CMB-HK007400		Arm Thread Guide Plate(U)	실걸이(상)	1	
A-14	DSC-BJ001300		Screw (9/64"n=40)	홈볼이 둥근납작작은나사(9/64"n=40)	1	
A-15	CMB-HK007500		Arm Thread Guide Plate (M)	실걸이(하)	1	
A-16	DSC-BJ001300		Screw (/64"n=40)	홈볼이 둥근납작작은나사(9/64"n=40)	1	
A-17	CMB-HK005500		Arm Thread Guide Plate (L)	아암 실안내(하)	1	
A-18	DSC-BJ001300		Screw (9/64"n=40)	홈볼이 둥근납작작은나사(9/64"n=40)	1	
A-19	CLB-BG003800		Holder For Upper Thread Oil Supply Felt	윗실 급유 펠트잡이	1	
A-20	DSC-BJ001600		Screw (3/32"n=56)	홈볼이 둥근납작작은나사(3/32"n=56)	2	
A-21	CLB-JL008800		Felt (Upper Thread)	윗실 급유펠트	1	
A-22	DPK-CB001100		Rubber Cap	고무마개(Hole)	1	
A-23	AST-PS000500		Bed Hinge(Ass'y)	베드힌지 (조)	1Set	
A-24	PSC-AC002600		Screw (M8×1.25)	육각구멍볼이 보울트(M8×1.25)	8	
A-25	CMB-LD006500		Brand Mark	상표마크 (암부)	1	
A-26	CMB-LD006600	BL	Model Mark	모델마크 (KM-390BL)	1	
A-27	CMB-BJ005700		Latch	두부고정쇠	1	
A-28	DSC-FD000300		Screw For A-27	무릎올림봉 단나사	1	
A-29	DSC-AD000100		Bolt For A-27	두부고정 나비볼트	1	
A-30	DWS-AA015400		Washer For A-27	두부고정와셔	1	
A-31	CGA-GA001700	BL	Needle Plate	침판	1	
A-32	DSC-BC000900		Screw (11/64"n=40)	홈볼이 둥근절시작은나사(11/64"n=40)	2	
A-33	CMB-BJ005900	BL	Slide Plate(Ass'y)	미끄럼판 (조)	1	
A-34	CMB-BF000200	BL	Guide(A) For A-33	미끄럼판안내 (A)	1	
A-35	DSC-BB000800		Screw (9/64"n=40)	접시머리 보울트(9/64"n=40)	2	
A-36	CMB-BF000300	BL	Guide (B) For A-33	미끄럼판안내 (B)	1	
A-37	DSC-BB000800		Screw (9/64"n=40)	접시머리 보울트(9/64"n=40)	2	
A-38	CMB-LA016900	BL	Cap For Bed	베드캡	1	
A-39	DBS-DB006600	BL	Guide Bush For Lower Shaft	하축안내 붓싱	1	
A-40	DSC-CB002400	BL	Screw (1/8"n=44)	육각구멍볼이 멈춤나사(1/8"n=44)	1	
A-41	DSC-BA000700		Screw (3/16"n=32)	홈볼이 냄비 작은나사(3/16"n=32)	2	
A-42	PPN-AF002800		Pin For A-38	베드카바 고정핀 (SPP:3D×12L)	2	
A-43	DSC-FG002100		Guide Shaft For Feed Rock Shaft	수형밀대 안내축	1	
A-44	DSN-AA000400		Nut (15/64"n=28)	육각너트 (15/64"n=28)	1	
A-45	CLB-JL009100		Lock Shaft Front Felt	수형밀대 (전) 펠트	1	
A-46	AMB-PS002900	BL	Hook Cover (Ass'y)	훅 커버(조)	1Set	
A-47	CFA-BJ001100	BL	Length Control Plate	문자판	1	
A-48	DSC-BB002000		Screw (9/64"n=40)	홈볼이 둥근납작작은나사(9/64"n=40)	4	
A-49	ATA-PS003200		Thread Tension Control (Ass'y)	실 조절 장치(560구 사양)	1Set	
A-50	DSC-BJ000200		Screw (11/64"n=40)	홈볼이 둥근납작작은나사(11/64"n=40)	1	
A-52	PPN-AD000100		Pin For A-51	번호판 핀	2	
A-53	DSC-BJ000300		Screw(9/64"n=40)	홈볼이 둥근납작작은나사(9/64"n=40)	1	
A-54	CTA-BJ001900		Stopper For A-49	실조절장치 스톱퍼	1	
A-55	DSC-BJ001400		Screw (9/64"n=40)	홈볼이 둥근납작작은나사(9/64"n=40)	1	
A-56	DSC-BJ001300		Screw (9/64"n=40)	훅커버 고정나사	2	
A-57	CMB-LD007700		Model Mark (KM-390)	모델마크(KM-390)	1	

**NOTE:**  
"BL" is a parts only for model KM-390BL

# B

## Upper and Upright Shaft Mechanism

### 상축 및 세운축 관계







Ref. No.	Parts No.	Note	Name of Parts	품명	Q'ty	Applied Period
B-1	CTH-HJ002000	BL	Thread Take Up Lever	실채기	1	
B-2	DPN-AA013200		Hinge Pin for B-1	실채기 핀	1	
B-4	DSC-CA000800		Screw (15/64"n=28)	홈볼이 멈춤나사 (15/64"n=28)	2	
B-5	CTH-BF000100		thread Take Up Lever Holder	실채기 잡이	1	
B-6	CLB-JL000800	BL	Oil Felt	칠환기 펠트	1	
B-7a	CLB-JL003000	BL	Felt For B-1	축 몸전체붓싱 펠트 (6-19)	1	
B-8	CUS-KC002000		Upper Shaft	상축	1	
B-9	CUS-DA002100		Link Cam	링크 캠	1	
B-10	DSC-BJ003700	BL	Screw (9/32"n=28)	홈볼이대금납작작은나사 (9/32"n=28)	1	
B-11	DSC-BF011500	BL	Screw (9/32"n=28)	홈볼이 납작 작은나사 (9/32"n=28)	1	
B-12	DPN-AA008801	BL	Needle Bar Crank Shaft	링크 캠 핀	1	
B-14	DSC-CA001100	BL	Screw (1/4"n=40)	홈볼이 멈춤나사 (1/4"n=40)	1	
B-15	DSC-CA001900	BL	Screw (1/4"n=40)	홈볼이 멈춤나사 (1/4"n=40)	1	
B-16	DCL-BB002400	BL	Link Cam Stopper Ling	상축 앞 붓싱 링	1	
B-17	DBS-DB006100	BL	Upper Shaft Front Bushing	상축 전 붓싱	1	
B-18	DSC-CA000800		Screw (15/64"n=28)	홈볼이 멈춤나사 (1/4"n=40)	1	
B-19	CLB-JL006600		Felt For B-17	상축 앞 붓싱 펠트	1	
B-20	DBS-DA023500		Upper Shaft Middle Bushing	상축 중 붓싱	1	
B-21	DSC-CA000800		Screw (15/64"n=28)	홈볼이 멈춤나사 (15/64"n=28)	1	
B-22	CLB-JL006600		Felt For B-20	상축 앞 붓싱 펠트	1	
B-23	DBS-DA025100		Feed Regulator Bushing	피드 조절 붓싱	1	
B-24	DSC-CA002100		Screw (9/32"n=28)	홈볼이 멈춤나사 (9/32"n=28)	1	
B-25	DSN-AA002200		Nut (9/32"n=28)	육각너트 (9/32"n=28)	1	
B-26	DPL-BA000500		Timing Belt Pulley (Up)	타이밍 벨트 풀리 (상)	1	
B-27	DSR-AK000500	BL	Ring For B-26	후렌치	2	
B-28	DSC-CB001800		Screw (1/4"n=40)	육각구멍볼이 멈춤나사 (1/4"n=40)	1	
B-29	DSC-CB000400		Screw (1/4"n=40)	육각구멍볼이 멈춤나사 (1/4"n=40)	1	
B-30	PBT-BA000300		Timing Belt	타이밍 벨트 (13749)	1	
B-31	PSR-AB000200	BL	Stop Ring (x47)	베어링 스텝링 (x47)	1	
B-32	PBR-AA008500		Bearing (6204 zz)	6204 베어링	1	
B-33	DPL-AA001001		Pully	풀리	1	
B-34	CUS-BN000100		Pully Ring	풀리 링	1	
B-35	DSC-CA000500		Screw (1/4"n=40)	홈볼이 멈춤나사 (1/4"n=40)	1	
B-36	DSC-BF000800		Screw (15/64"n=28)	홈볼이 납작작은나사 (15/64"n=28)	2	
B-37	DSC-BG000200		Screw (5/16"n=24)	홈볼이바인딩작은나사 (5/16"n=24)	1	
B-38	DCL-AA007200		Collar For B-17	상축 카라	1	
B-39	DSC-CA000500		Screw (1/4"n=40)	홈볼이 멈춤나사 (1/4"n=40)	2	
B-40	CLS-KF000600		Lower Shaft	하축	1	
B-41	DBS-DA023700		Lower Shaft Front Bushing	하축 전 붓싱	1	
B-42	DSC-CA000800		Screw (15/64"n=28)	홈볼이 멈춤나사 (15/64"n=28)	1	
B-43	CLB-JL008900		Felt For B-41	상축후 붓싱 급유 펠트	1	
B-44	DCL-AA007900		Collar For B-40	하축 카라	1	
B-45	DSC-CA001700		Screw (15/64"n=28)	홈볼이 멈춤나사 (15/64"n=28)	2	
B-46	DBS-DA023800		Lower Shaft Rear Bushing	하축 후 붓싱	1	
B-47	DSC-CA000800		Screw (15/64"n=28)	홈볼이 멈춤나사 (15/64"n=28)	1	
B-48-1	DPL-BA000600	BL	Safety Clutch Belt Pulley	안전장치 벨트 풀리	1	
B-48-2	PBR-AD000900	BL	Safety Clutch Driving Ball	안전장치 크러치 구동용볼 (7/3)	3	
B-48-3	CLS-BA000200	BL	Safety Clutch Collar	안전장치 카라 (K2553)	1	
B-48-4	CLS-BJ001000		Safety Clutch Disc	안전장치 크러치판 (K2542)	1	
B-48-5	DSP-AA009500		Safety Clutch Ball Spring	안전장치 스프링	3	
B-48-6	CLS-BJ001100		Stop -Ring For B-48-3 (x16)	안전장치 카라 스텝링 (STW16)	1	
B-48-7	PSN-AA003600		Nut For B-48-7	안전장치 스프링 조정나사 너트	3	
B-48-8	DSC-CB001800		Screw (1/4"n=40)	육각구멍볼이 멈춤나사(1/4"n=40)	1	
B-48-9	DSC-CB000400		Screw (1/4"n=40)	육각구멍볼이 멈춤나사(1/4"n=40)	1	
B-48-10	DSR-AK000500		Ring For B-48-1	안전장치 벨트 풀리 링	1	
B-48-11	DSC-CA004200		Screw (M10x1.25)	홈볼이 멈춤나사 (M10x1.25)	3	
B-49	DGR-AD001000		Lower Shaft Gear	하축기어 (13733)	1	

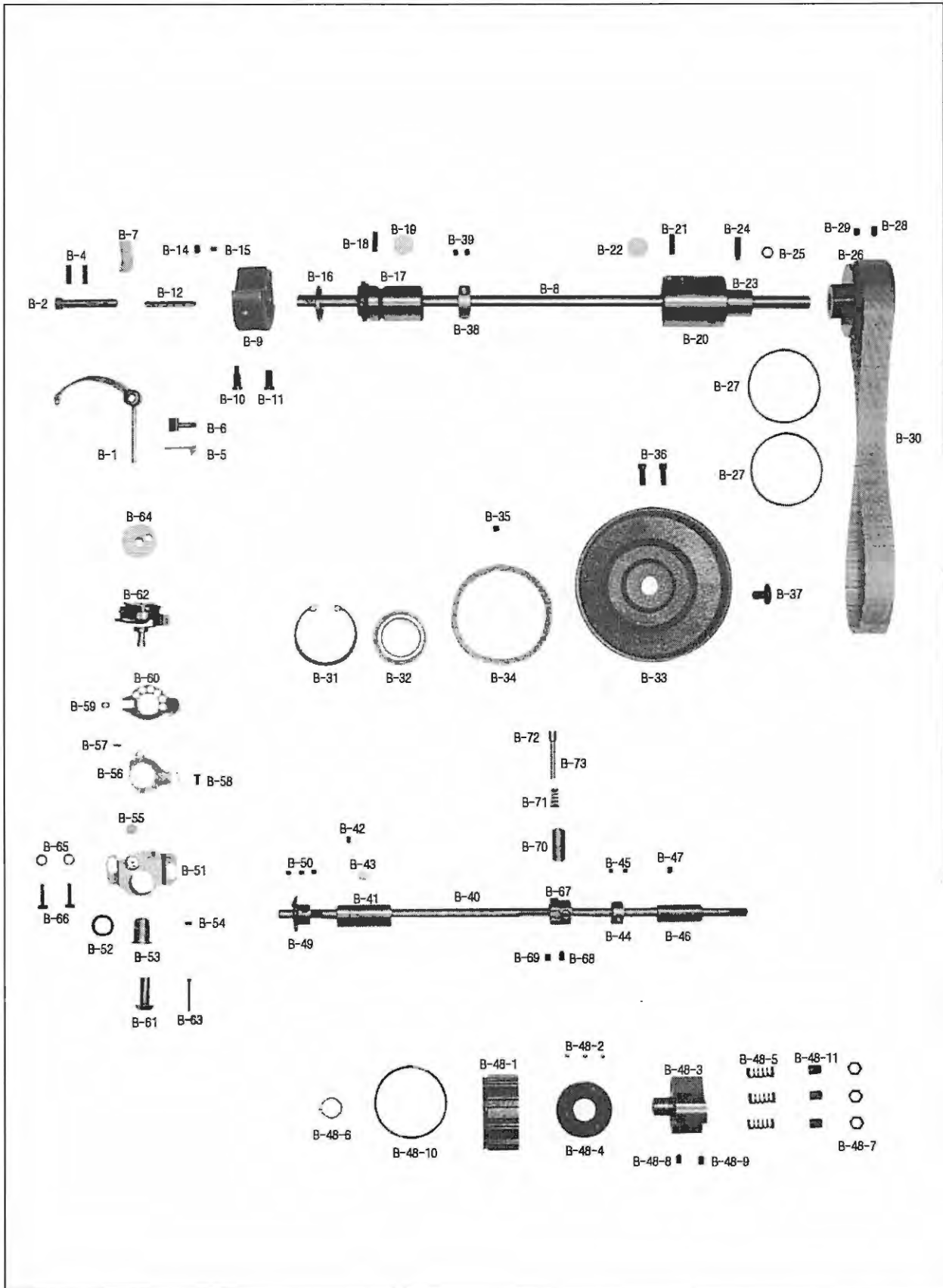
**NOTE:**  
"BL" is a parts only for model KM-350BL



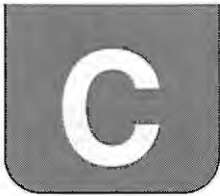
# B

## Upper and Upright Shaft Mechanism

### 상축 및 세운축 관계

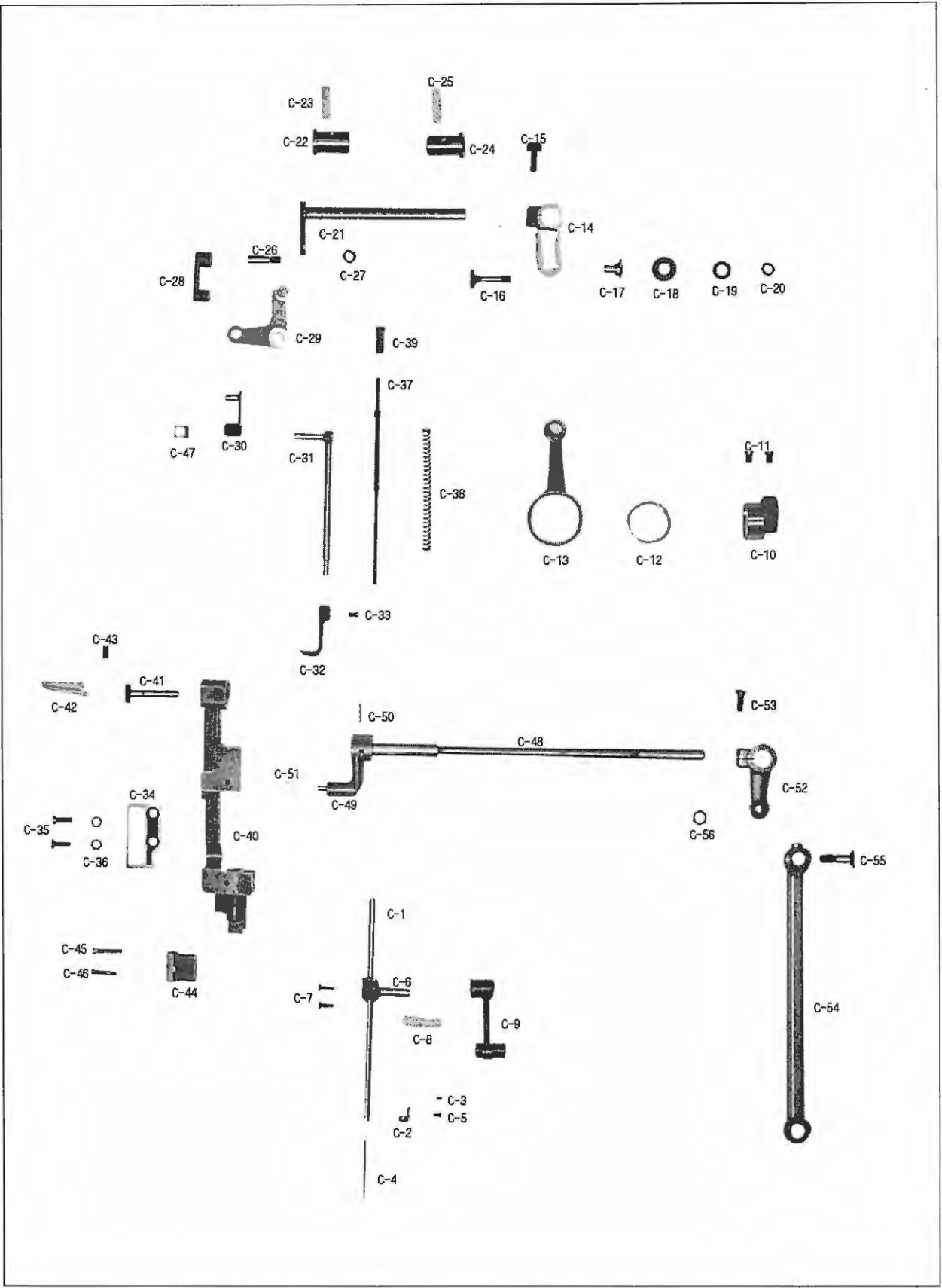






# Needle Bar and Upper Feed Mechanism

## 바늘대 및 상피이드 관계







Ref. No.	Parts No.	Note	Name of Parts	품 명	Q'ty	Applied Period
C-1	CNB-KA002000	BL	Needle Bar	바늘대	1	
C-2	CNB-HK001500	BL	Needle Guide For Needle Bar	바늘대 실안내	1	
C-3	DSC-BJ002200	BL	Screw (3/32"n=56)	홈이 비인딩 작은나사 (3/32"n=56)	1	
C-4	-	BL	Needle	바늘	1	
C-5	DSC-BJ004300	BL	Screw (9/64"n=4)	홈이동근납작작은나사 (9/64"n=40)	1	
C-6	CNB-BF001800	BL	Needle Bar Holder	바늘대잡이	1	
C-7	DSC-BJ000300	BL	Screw (9/64"n=40)	홈이동근납작작은나사 (9/64"n=40)	2	
C-8	CLB-JL000800	BL	Oil Felt	절환기 펠트	1	
C-9	CTH-CC001400	BL	Needle Bar Crank	바늘대 크랭크	1	
C-10	CUF-DC000400		Upper Feed Lifting Eccentric Cam	노루발 상하운동 캠	1	
C-11	DSC-BJ002000		Screw For C-10	노루발 상하운동 캠 고정나사	2	
C-12	PBR-BA002800		Needle Bearing	니어들 베어링	1	
C-13	CUF-CC001500		Upper Feed Lifting Cam Lod	노루발 상하운동 캠 로드	1	
C-14	CUF-CB001900		Upper Feed Eccentric Wheel Crank	상하운동 크랭크 (K2556)	1	
C-15	DSC-AA000700		Screw (1/4"n=28)	육각 보울트 (1/4"n=28)	1	
C-16	CUF-KZ000700		Upper Feed Lifting Adjusting Shaft	노루발 상하운동 조절축	1	
C-17	DBS-DB006700		Bushing For C-16	노루발 상하운동 조절축 붓심	1	
C-18	15-009A-5607		Collar For C-16	노루발 상하운동 조절축 카리	1	
C-19	CUF-KZ000501		Washer For C-16	노루발 상하운동 조절축 외셔	1	
C-20	DSN-AA000500		Nut (1/4"n=40)	육각너트 (1/4"n=40)	1	
C-21	CUF-KZ000501		Upper Feed Driving Shaft	상하운동축	1	
C-22	DBS-DB006200		Front Bushing For C-21	상하운동축 전붓심	1	
C-23	CLB-JL009000		Felt For C-22	상하운동축 전붓심 펠트	1	
C-24	DBS-DB006300		Rear Bushing For C-21	상하운동축 후붓심	1	
C-25	CLB-JL009000		Felt For C-24	상하운동축 후붓심 펠트	1	
C-26	DSC-FF001900		Stud Screw For Connection Link	삼피이드 연결 링크 축나사	1	
C-27	DSN-AA000500		Nut (1/4"n=40)	육각너트 (1/4"n=40)	1	
C-28	CUF-CA001500		Connecting Link For Upper Feed Lifting	삼피이드 연결링크	1	
C-29	CUF-CA001700		Link For Upper Feed Foot	삼피이드 노루발 연결링크	1	
C-30	CUF-CA001800		Walking Bar Driving Link	삼피이드 노루발 운동링크	1	
C-31	CUF-CR000100		Walking Bar	삼피이드 노루발대	1	
C-32	CGA-GC002800		Upper Feed Presser Foot	삼피이드 노루발(D)	1	
C-33	DSC-BA001000		Screw (11/64"n=40)	홈이 냄비 작은나사 (11/64"n=40)	1	
C-34	CNB-BK001200		Walking Bar Guide Plate	노루발대 안내판 (K2555)	1	
C-35	DSC-BF0003100		Screw (11/64"n=40)	홈이 납작 작은나사 (11/64"n=40)	2	
C-36	DWS-AA001100		Washer For C-34	뿔뚜껍 침 외셔	2	
C-37	CUF-KF000300		Walking Foot Pressure Adjusting Pole	삼피이드 노루발 압력봉	1	
C-38	DSP-AA009400		walking Foot Pressure Spring	삼피이드 노루발 압력스프링	1	
C-39	DSC-BF003500		Screw (5/16"n=28)	홈이 납작 작은나사 (5/16"n=28)	1	
C-40	CNB-BC000700	BL	Needle Bar Frame	바늘대 후레임	1	
C-41	DPN-AD008500		Hinge Pin For C-40	바늘대 후레임 힌지핀	1	
C-42	CLB-JD000300		Wick	유심	1	
C-43	DSC-CA000800		Screw (15/64"n=28)	홈이 멈춤나사 (15/64"n=28)	1	
C-44	CNB-BK001300		Guide For Needle Bar Frame	바늘대 후레임 안내판	1	
C-45	DSC-BJ005300		Screw (A) For C-44	바늘대 후레임 안내판침나사B	1	
C-46	DSC-BA001100		Screw (11/64"n=28)	홈이 냄비 작은나사 (11/64"n=28)	1	
C-47	CUF-CD000200		Walking Bar Guide Block	삼피이드 노루발 안내블럭	1	
C-48	CNB-KF000400		Needle Bar Frame Driving Shaft	바늘대 후레임 요동축	1	
C-49	CNB-CB000400		Needle Bar Frame Shaft Crank (F)	요동축 크랭크 (전)	1	
C-50	DPN-AB000300		Pin For C-49	요동축 크랭크 전 고정핀	1	
C-51	CNB-CD001100		Needle Bar Frame Block	바늘대 후레임 블럭	1	
C-52	CUF-CB002000	BL	Needle Bar Rock Crank	바늘대 요동 크랭크	1	
C-53	DSC-BJ000600		Screw (15/64"n=28)	홈이동근납작작은나사 (15/64"n=28)	1	
C-54	CUF-CC001700	BL	Connecting Rod For C-48	요동축 연결로드	1	
C-55	DSC-FA015600		Stud Screw For C-52	노루발 상하 운동축 크랭크 단나사	1	
C-56	DSN-AA000400		Nut (15/64"n=28)	육각너트 (15/64"n=28)	1	

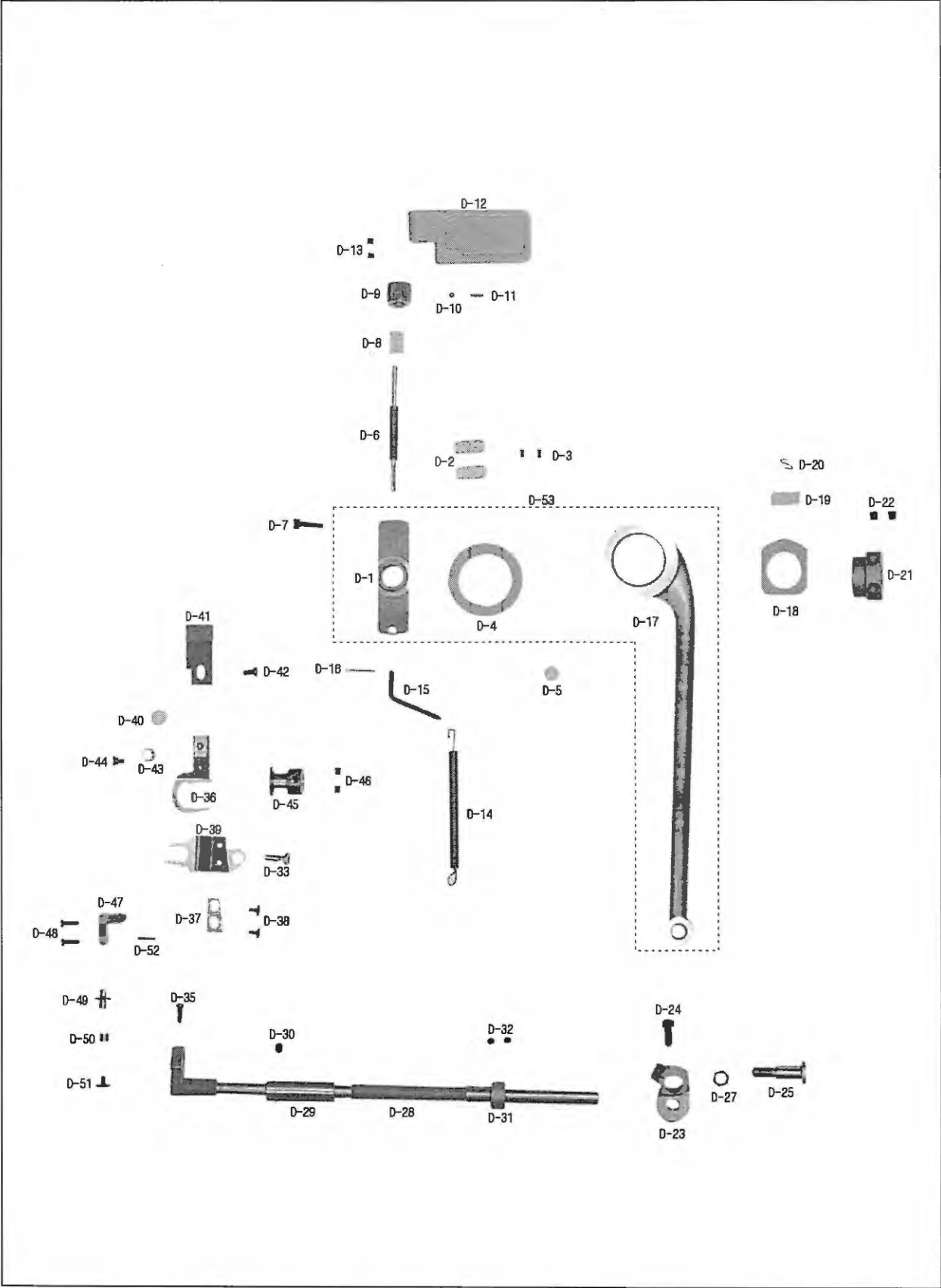
**NOTE:**  
"BL" is a  
parts only for  
model KM-39BL



# D

## Lower Shaft and Lower Feed Mechanism

### 하축 및 하피이드 관계

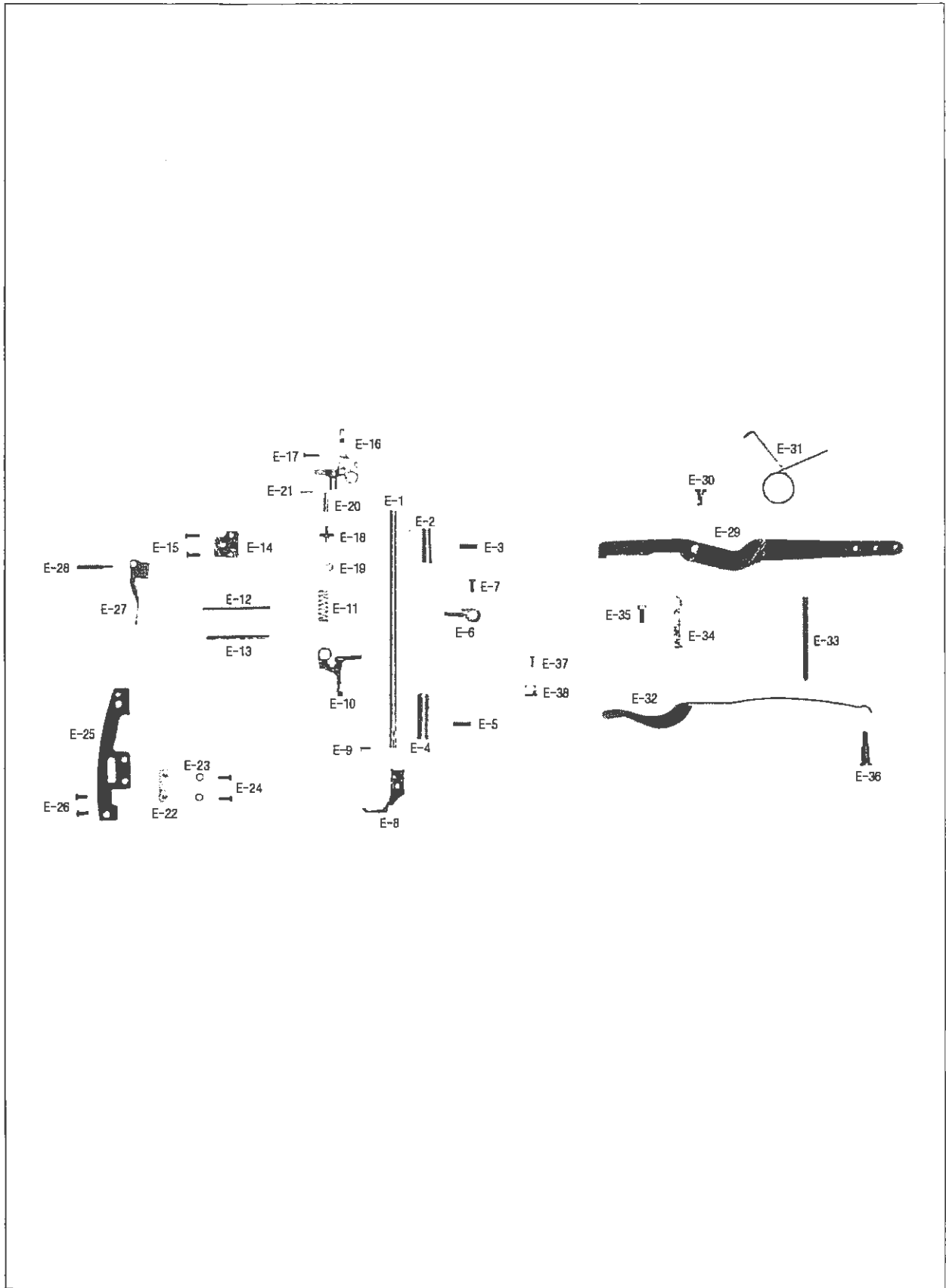






# Presser Foot and Knee Lifting Mechanism

## 노루발 및 무릎올림 관계



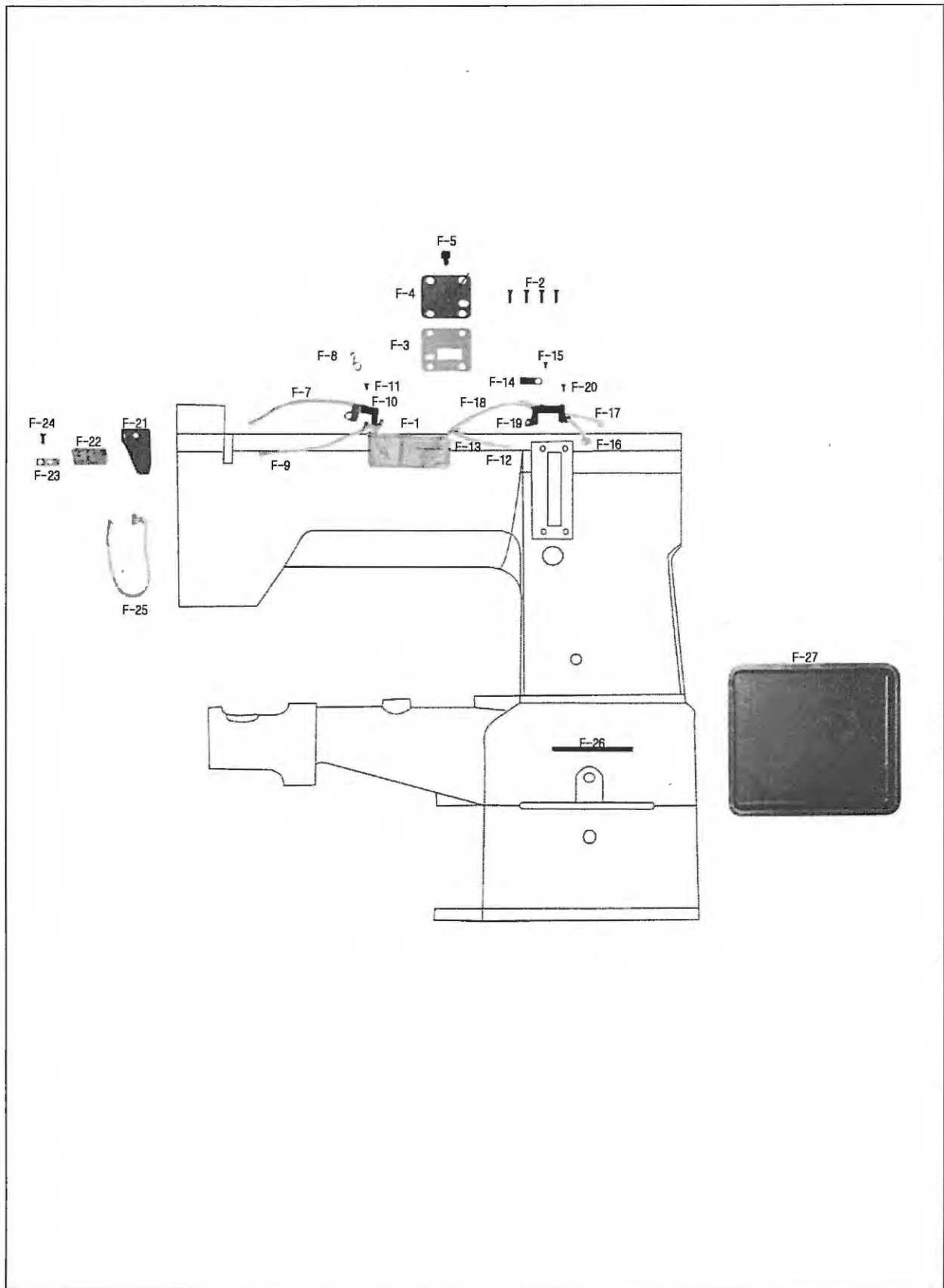






# Lubrication Mechanism

## 급유 관계

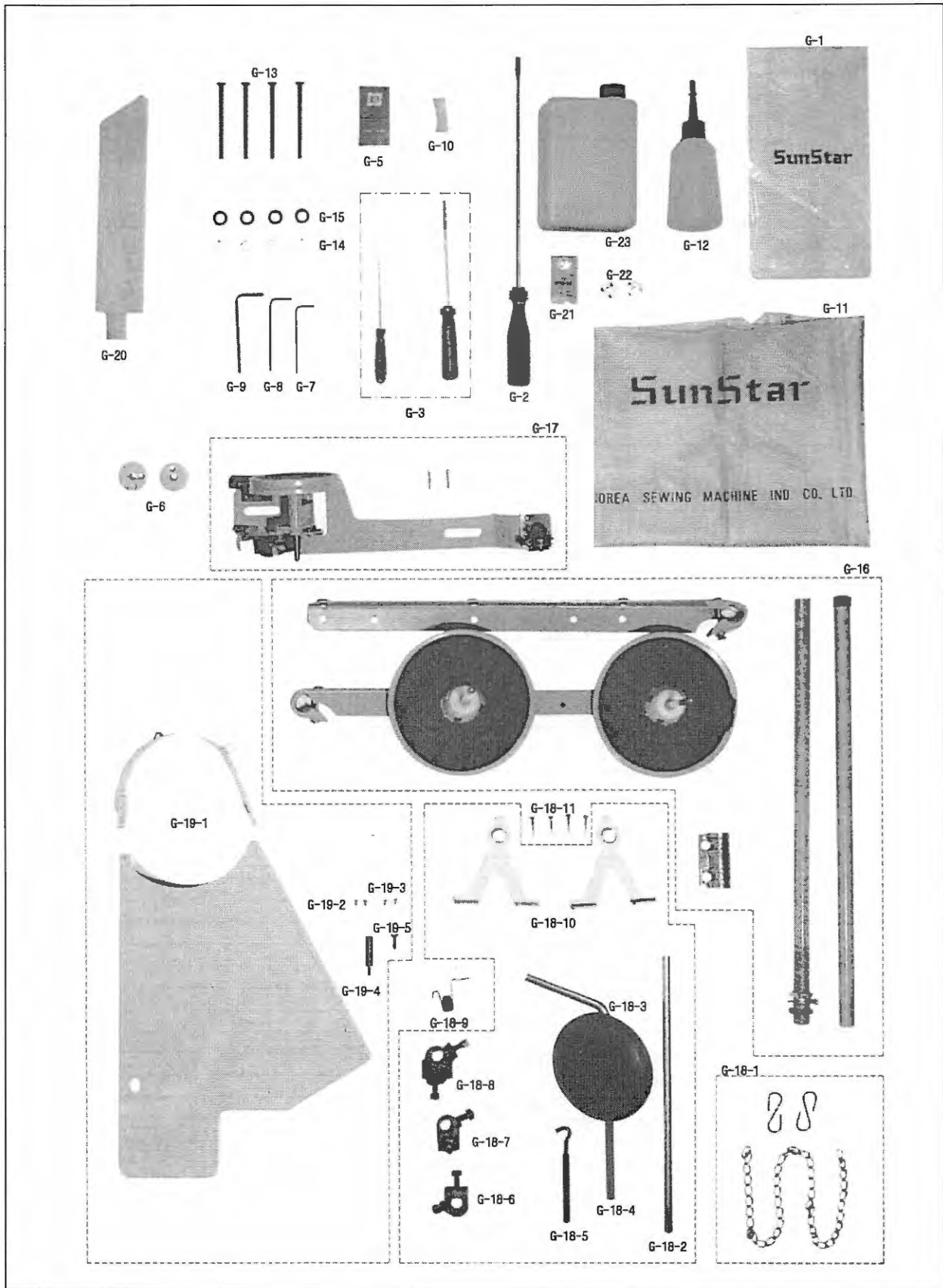




# G

## Accessory Mechanism

### 액세서리 관계





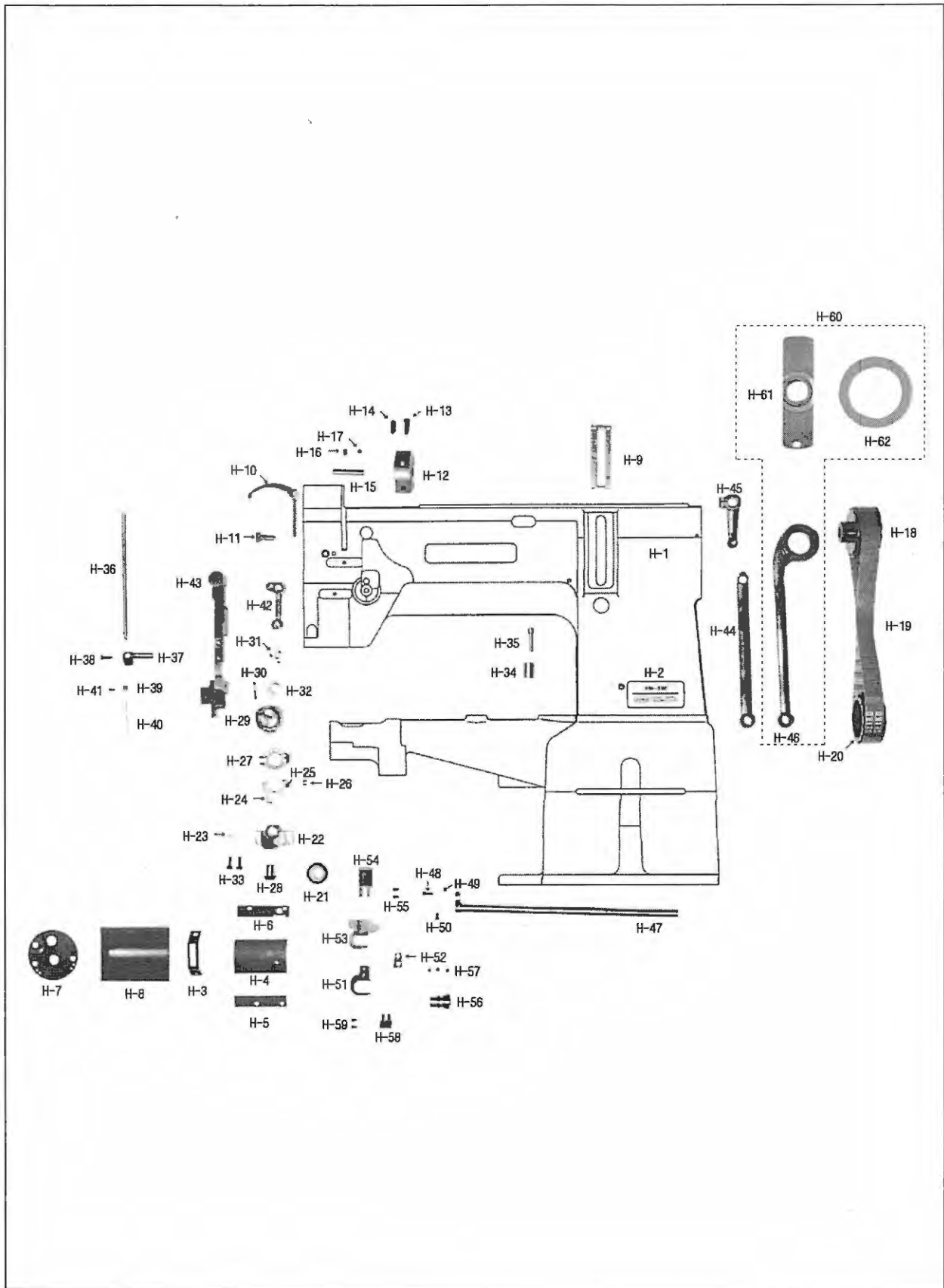






# Special Parts for KM-390 Mechanism

## KM-390 전용 부품 관계





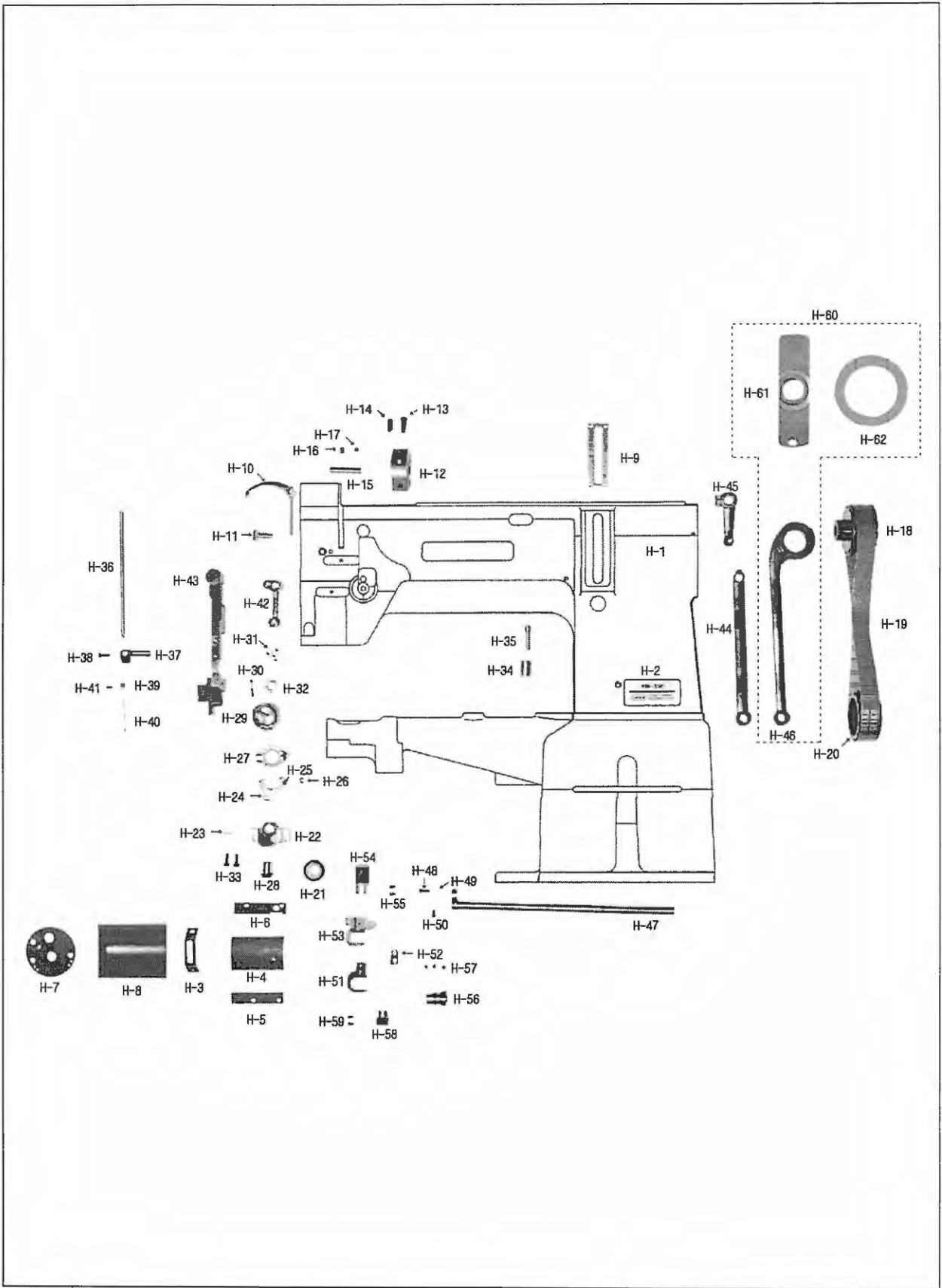
Ref. No.	Parts No.	Note	Name of Parts	품 명	Q'ty	Applied Period
H-1	01-001A-390A		Arm, Cylinder Bed, Base	아암, 실린더 베드, 두부받침 (조)	1Set	
H-2	CMB-LD006700		Model Mark	모델마크	1	
H-3	CGA-GA004100		Needle Plate	침판	1	
H-4	CMB-BJ005900		Slide Plate (Ass'y)	미끄럼판 (조)	1Set	
H-5	CMB-BF000400		Guide (A) for H-4	미끄럼판 안내 (A)	1	
H-6	CMB-BF000500		Guide (B) for H-4	미끄럼판 안내 (B)	1	
H-7	AMB-PS003500		Cap for Bed	베드캡	1	
H-8	AMB-PS003700		Hook Cover (Ass'y)	훅커버(조)	1Set	
H-9	CFA-BJ001200		Length Control Plate	문자판	1	
H-10	CTH-HJ002500		Thread Take -Up Lever	실채기	1	
H-11	CTH-BF000200		Thread Take -Up Lever Holder	실채기 집어	1	
H-12	CUS-DA003200		Link Cam	링크캠	1	
H-13	DSC-BJ003700		Screw (A) for H-12	링크캠 고정나사	1	
H-14	DSC-CA002100		Screw (B) for H-12	링크캠 침나사	1	
H-15	DPN-AA014800		Needle Bar Crank Shaft	바늘대 크랭크 축	1	
H-16	DSC-CA000800		Screw (A) for H-15	바늘대 크랭크 축 고정나사(A)	1	
H-17	DSC-CA000800		Screw (B) for H-15	바늘대 크랭크 축 고정나사(B)	1	
H-18	DPL-BA000500		Timing Belt Pulley (Up)	타이밍 벨트 풀리 (상)	1	
H-19	PBT-BA000400		Timing Belt	타이밍 벨트	1	
H-20	DPL-BA000600		Safety Clutch Belt Pulley	안전장치 벨트 풀리	1	
H-21	DGR-AD001200		Lower Shaft Gear	하축 기어	1	
H-22	CHB-BA001100		Hook Base	훅 받침	1	
H-23	CLB-JL011600		Hook Gear Felt	훅축 기어 felt	1	
H-24	CHB-BA001200		Base for Opener Guide Block Shaft	오프너 안내 블럭축 베이스	1	
H-25	DPN-BC004900		Shaft for Opener Guide Block	오프너 안내 블럭축	1	
H-26	CHB-CD000200		Guide Block for Opener	오프너 안내 블럭	1	
H-27	CHB-HN000400		Opener	오프너	1	
H-28	DGR-AD001300		Rotary Hook Gear (Ass'y)	로타리 훅 기어	1	
H-29	CHK-HA002300		Rotary Hook	로타리 훅	1	
H-30	DSC-BB004300		Screw for H-29	로타리 훅 고정나사	1	
H-31	CHK-HB001100		Bobbin	보빈	1	
H-32	DSP-BA002800		Spring for Bobbin	보빈 받침 스프링	1	
H-33	DSC-AA002800		Screw for H-22	훅받침 침 나사	2	
H-34	DBS-DA0028200		Bushing for B-72	안전 장치 래치트 버튼 붓싱	1	
H-35	DPN-BC004800		Button for B-67	안전 장치 래치트 버튼	1	
H-36	CNB-KA003500		Needle Bar	바늘대	1	
H-37	CNB-BF002200		Needle Bar Holder	바늘대 집어	1	
H-38	DSC-BF010100		Screw (11/64"n=40)	홈볼이 납작 작은나사 (11/64"n=40)	1	
H-39	CNB-HK002300		Thread Guide for Needle Bar	바늘대 실안내	1	
H-40	-		Needle (DPX17#22)	바늘	1	
H-41	DSC-BF000100		Screw for H-38	바늘 고정나사	1	
H-42	CTH-CJ001500		Needle Bar Crank	바늘대 크랭크	1	
H-43	CNB-BC001200		Needle Bar Frame	바늘대 후레임	1	
H-44	CUF-CC002100		Connecting Rod for C-48	요동축 연결로드	1	
H-45	CUF-CB002700		Needle Bar Rock Crank	바늘대 요동 크랭크	1	
H-46	CNB-CC000800		Feed Rock Shaft Connecting Rod	수평이송로드	1	
H-47	GP-035168-00		Feed Rock Shaft	수평밀대	1	
H-48	DSC-BB004500		Feed Lifter Stud	뜸니받침 축 나사	1	
H-49	DPN-AA014900		Feed Lifter Stud Presser	뜸니받침 축 나사 누름봉	1	
H-50	DSC-BJ001400		Screw for H-46	뜸니받침 축 나사 고정나사	1	
H-51	CLF-BA001301		Feed Lifter Fork	뜸니받침 포오크	1	
H-52	CLF-BK000600		Feed Lifter Fork Guide	뜸니받침 포오크 안내	1	
H-53	CLF-BA001201		Feed Lifter	뜸니받침	1	
H-54	CGA-GB003200		Feed Dog	뜸니	1	
H-55	DSC-BA001000		Screw (11/64"n=40)	홈볼이 납비 작은나사 (11/64"n=40)	2	
H-56	CLF-DC002700		Vertical Feed Eccentric Cam	상하핀심캠	1	
H-57	DSC-CB000700		Screw for H-53	상하핀심캠 고정나사	3	

**NOTE:**  
"BL" is a  
parts only for  
model KM-390BL



# Special Parts for KM-390 Mechanism

## KM-390 전용 부품 관계



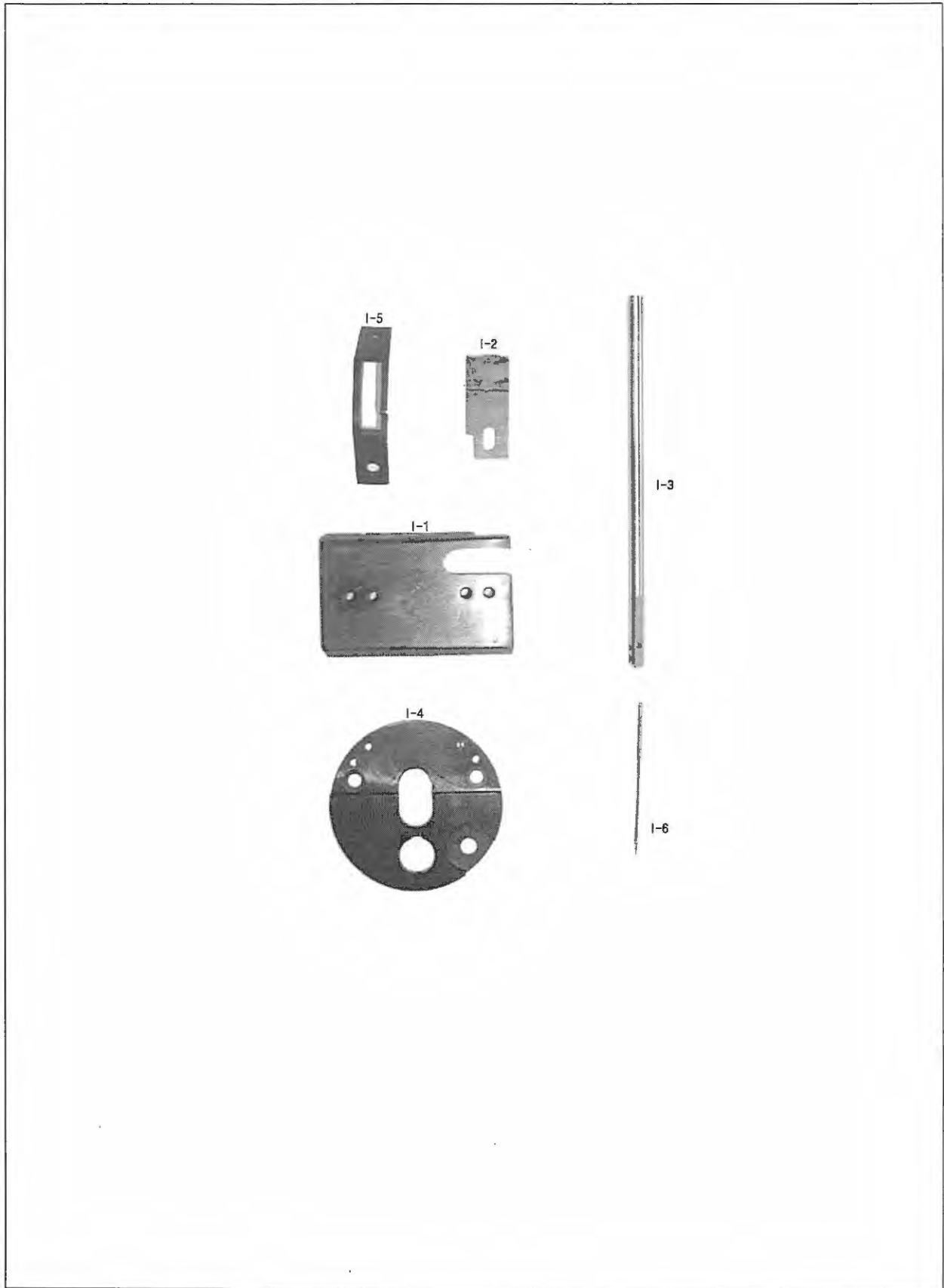






# Special Parts for KM-390BLS Mechanism

KM-390BLS 전용 부품 관계





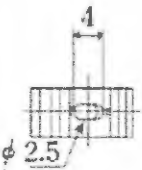
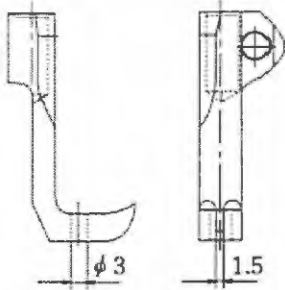
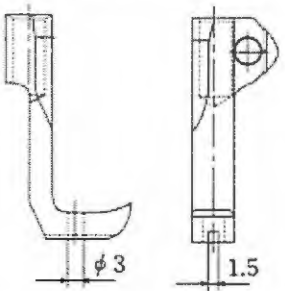
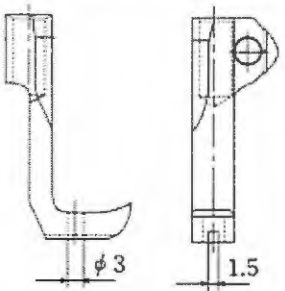
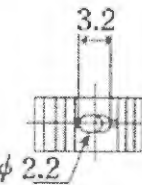
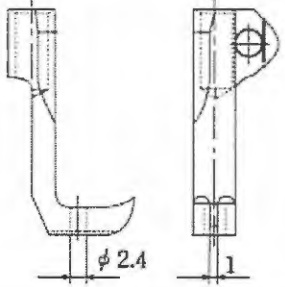
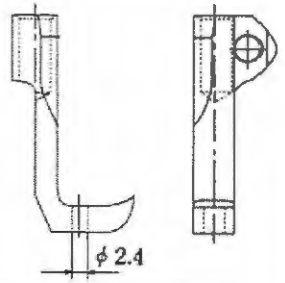
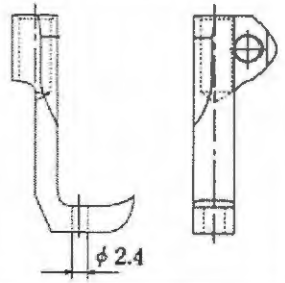




# Gauge Parts

## 게이지 파트

### KM-390BL

Feed Dog (톱니)			Upper Feed Presser Foot (상피이드 노루발)		
Ref. No.	Parts No.	Specification	Ref. No.	Parts No.	Specification
D-41	CGA-GB003300	Standard Parts 	C-32	CGA-GC005700	Standard Parts 
		Option Parts 			Option Parts 
	CGA-GB001800	Option Parts 		CGA-GC005800	Option Parts(1) 
		Option Parts 			Option Parts(2) 

\*If You Wish to Use Special Order Parts, Use "Parts No." Above The Chart to Order It.

# Index

Parts No.	Name of Parts	Page	Ref.No.	Parts No.	Name of Parts	Page	Ref.No.	Parts No.	Name of Parts	Page	Ref.No.
01-001A-3900	Arm Cylinder Bed	7	A-1	CLB-JD000300	Oil Tank Cork	19	F-5	CMB-HK007500	Arm Thread Guide Plate (M)	7	A-15
01-001A-390A	Arm, Cylinder Bed, Base	23	H-1	CLB-JD000300	Oil Wick	19	F-9	CMB-HK007600	Top Cover Thread Guide	7	A-10
01-019A-3900	Cap for Bed - Option Gauge (G)	27	I-4	CLB-JD000300	Oil Wick	19	F-12	CMB-LA014900	Top Cover	7	A-8
01-215A-3900	Needle Plate - Option Gauge (G)	27	I-5	CLB-JD000300	Oil Wick	19	F-16	CMB-LA015300	Thread Take Up Cover	7	A-6
06-031A-3900	Roller For D-49	15	D-50	CLB-JD000300	Oil Wick	19	F-17	CMB-LA016900	Cap For Bed	7	A-38
06-224A-3900	Feed Dog - Option Gauge (G)	27	I-2	CLB-JD000300	Oil Wick	19	F-25	CMB-LD006500	Brand Mark	7	A-25
15-009A-5607	Collar For C-16	13	C-18	CLB-JD000300	Wick	13	C-42	CMB-LD006600	Model Mark	7	A-26
43-006A-3900	Knee Lifting Chain (Ass'y)	21	G-18-1	CLB-JG000300	Oil Return Tube	19	F-7	CMB-LD006700	Model Mark	23	H-2
43-112C-3800	Connecting Hook For G-18-1	21	G-18-5	CLB-JG000300	Oil Return Tube	19	F-13	CMB-LD007700	Model Mark (KM-390)	7	A-57
AAC-PS000101	Bobbin Winder (Ass'y)	21	G-17	CLB-JG000300	Oil Return Tube	19	F-18	CNB-BC000700	Needle Bar Frame	13	C-40
ALB-PS001600	Oil Tank (Ass'y)	19	F-1	CLB-JL000800	Oil Felt	9	B-6	CNB-BC001200	Needle Bar Frame	23	H-43
AMB-PS002900	Hook Cover (Ass'y)	7	A-46	CLB-JL000800	Oil Felt	13	C-8	CNB-BF001800	Needle Bar Holder	13	C-6
AMB-PS003400	Belt Cover (Ass'y)	21	G-19-1	CLB-JL003000	Felt For B-1	9	B-7a	CNB-BF002200	Needle Bar Holder	23	H-37
AMB-PS003500	Cap for Bed	23	H-7	CLB-JL006400	Felt For B-1	19	F-22	CNB-BK001200	Walking Bar Guide Plate	13	C-34
AMB-PS003700	Hook Cover (Ass'y)	23	H-8	CLB-JL006600	Felt For B-17	9	B-19	CNB-BK001300	Guide For Needle Bar Frame	13	C-44
AS-007347-00	Feed Lock Shaft Connecting Rod/Set	15	D-53	CLB-JL006600	Felt For B-20	9	B-22	CNB-CB000400	Needle Bar Frame Shaft Crank (F)	13	C-49
AST-PS000500	Bed Hinge(Ass'y)	7	A-23	CLB-JL007600	Felt For B-18	15	D-19	CNB-CC000800	Feed Rock Shaft Connecting Rod	23	H-46
ATA-PS000200	Thread Tension Control (Ass'y)	7	A-49	CLB-JL008800	Felt (Upper Thread)	7	A-21	CNB-CD001100	Needle Bar Frame Block	13	C-51
CAB-BA000400	Base	7	A-1-1	CLB-JL008800	Felt (Upper Thread)	21	G-10	CNB-HK001500	Needle Guide For Needle Bar	13	C-2
CAC-JB000100	Oilier	21	G-12	CLB-JL008900	Felt For B-41	9	B-43	CNB-HK002300	Thread Guide for Needle Bar	23	H-39
CAC-JB000200	Oil	21	G-23	CLB-JL009000	Felt For C-22	13	C-23	CNB-KA002000	Needle Bar	13	C-1
CAC-MA000600	Head Cover	21	G-11	CLB-JL009000	Felt For C-24	13	C-25	CNB-KA003500	Needle Bar	23	H-36
CAC-MH000100	Accessory Bag	21	G-1	CLB-JL009100	Lock Shaft Front Felt	7	A-45	CNB-KF000400	Needle Bar Frame Driving Shaft	13	C-48
CFA-BA000100	Feed Regulator	15	D-1	CLB-JL009200	Felt For D-1	15	D-2	CPB-BB000900	Presser Bar Guide Bracket	17	E-16
CFA-BF000300	Holder For D-1	15	D-4	CLB-JL009200	Felt For D-4	15	D-5	CPB-BF001100	Presser Bar Bracket	17	E-6
CFA-BH000200	Hook For D-14	15	D-15	CLB-JL009300	Felt For B-51	11	B-55	CPB-BJ001300	Plate For Roller Guide	17	E-25
CFA-BJ001100	Length Control Plate	7	A-47	CLB-JL009300	Felt For D-36	15	D-40	CPB-BK000400	Guide Bar Bracket Roller	17	E-22
CFA-BJ001200	Length Control Plate	23	H-9	CLB-JL011600	Hook Gear Felt	23	H-23	CPB-CL000500	Roller For Presser Bracket	17	E-19
CFA-BQ000100	Feed Adjusting Pipe	15	D-8	CLB-LA000600	Oil Tank Pushing Plate (Ass'y)	19	F-4	CPB-CL000500	Roller Shaft	17	E-20
CFA-CM001600	Reverse Feed Control Lever	15	D-12	CLF-BA000801	Feed Lifter	15	D-39	CPB-CM000600	Presser Bar Lifter	17	E-27
CFA-KZ000200	Reverse Feed Control Lever Shaft	15	D-6	CLF-BA000901	Feed Lifting Fork	15	D-36	CPB-KB000901	Presser Bar	17	E-1
CGA-GA001700	Needle Plate	7	A-31	CLF-BA001201	Feed Lifter	23	H-53	CPM-BF000200	Presser Bar Plate Spring Rack	17	E-37
CGA-GA004100	Needle Plate	23	H-3	CLF-BA001301	Feed Lifter Fork	23	H-51	CPM-BJ001200	Stopper For Knee Lifting Lever	17	E-34
CGA-GB001800	Feed Dog	15	D-41	CLF-BB000700	Feed Lifting Guide Body	15	D-47	CPM-BJ001300	Plate Spring For Presser Bar	17	E-32
CGA-GB003200	Feed Dog	23	H-54	CLF-BB000900	Feed Lifter Guide	25	H-58	CPM-CM001800	Knee Lifting Lever	17	E-29
CGA-GC002800	Upper Feed Presser Foot	13	C-32	CLF-BK000400	Feed Lifting Fork Guide	15	D-37	CST-BB004100	Bracket For G-18-2	21	G-18-10
CGA-GC002900	Sub Presser Foot	17	E-8	CLF-BK000600	Feed Lifter Fork Guide	23	H-52	CST-CB000200	Knee Lifting Adjusting Crank	21	G-18-6
CHB-BA000600	Hook Base	11	B-51	CLF-CA001000	Link For D-17	15	D-18	CST-CB000500	Crank For G-18-4	21	G-18-7
CHB-BA000700	Base For Opener Guide Block Shaft	11	B-56	CLF-CB002700	Crank (Rear) For D-28	15	D-23	CST-CB000600	Crank For G-18-5	21	G-18-6
CHB-BA000700	Shaft For Opener Guide Block	11	B-57	CLF-CC001900	Feed Rock Shaft Connecting Rod	15	D-17	CST-CR000700	Head Rest	21	G-20
CHB-BA001100	Hook Base	23	H-22	CLF-DC001400	Feed Cam	15	D-21	CST-FZ000200	Knee Lifting Pad	21	G-18-3
CHB-BA001200	Base for Opener Guide Block Shaft	23	H-24	CLF-DC001900	Vertical Feed Eccentric Cam	15	D-45	CST-JA002800	Oil Pan	19	F-27
CHB-CD000200	Guide Block for Opener	23	H-26	CLF-DC002100	Eccentric Collar For Feed Regulator	15	D-43	CST-KC000300	Knee Supporting Shaft	21	G-18-4
CHB-CD000300	Guide Block For Opener	11	B-59	CLF-DC002700	Vertical Feed Eccentric Cam	23	H-56	CST-KC001000	Knee Lifting Shaft	21	G-18-2
CHB-HN000300	Opener	11	B-60	CLF-KF000900	Vertical Feed Lifting Guide Shaft	15	D-49	CST-MF000100	Thread Stand (Ass'y)	21	G-16
CHB-HN000400	Opener	23	H-27	CLF-KZ000600	Feed Rock Shaft	15	D-28	CTA-BJ001900	Stopper For A-49	7	A-54
CHK-HA001500	Rotary Hook	11	B-62	CLS-BA000200	Safety Clutch Collar	9	B-48-3	CTH-BF000100	Thread Take Up Lever Holder	9	B-5
CHK-HA002300	Rotary Hook	23	H-29	CLS-BJ001000	Safety Clutch Disc	9	B-48-4	CTH-BF000200	Thread Take -Up Lever Holder	23	H-11
CHK-HB001000	Bobbin	11	B-64	CLS-BJ001100	Stop -Ring For B-48-3 (X16)	9	B-48-6	CTH-CC001400	Needle Bar Crank	13	C-9
CHK-HB001000	Bobbin	21	G-6	CLS-CS000100	Ratchet For Safety Clutch	11	B-67	CTH-CJ001500	Needle Bar Crank	23	H-42
CHK-HB001100	Bobbin	21	G-22	CLS-KF000600	Lower Shaft	9	B-40	CTH-HJ002000	Thread Take Up Lever	9	B-1
CHK-HB001100	Bobbin	23	H-31	CMB-BF000200	Guide(A) For A-33	7	A-34	CTH-HJ002500	Thread Take -Up Lever	23	H-10
CLB-BF000400	Holder For F-13	19	F-14	CMB-BF000300	Guide (B) For A-33	7	A-36	CTR-BA000200	Tension Release Plate	17	E-14
CLB-BF000600	Holder For F-17	19	F-19	CMB-BF000400	Guide (A) for H-4	23	H-5	CTR-BJ001700	Thread Tension Release (Ass'y)	17	E-10
CLB-BF001100	Wick Holder	19	F-10	CMB-BF000500	Guide (B) for H-4	23	H-6	CTR-BQ000100	Pipe For E-12	17	E-13
CLB-BG003800	Holder For Upper Thread Oil Supply Felt	7	A-19	CMB-BJ005600	Face Plate	7	A-2	CTR-KC000400	Thread Tension Release Shaft	17	E-12
CLB-BH000400	Hook For F-7	19	F-8	CMB-BJ005700	Latch	7	A-27	CUF-CA001500	Connecting Link For Upper Feed Lifting	13	C-28
CLB-BH001800	Holder For D-19	15	D-20	CMB-BJ005900	Slide Plate (Ass'y)	23	H-4	CUF-CA001700	Link For Upper Feed Foot	13	C-29
CLB-BJ001900	Oil Cover	19	F-21	CMB-BJ005900	Slide Plate(Ass'y)	7	A-33	CUF-CA001800	Walking Bar Driving Link	13	C-30
CLB-BJ002100	Oil Cover Presser	19	F-23	CMB-HK005500	Arm Thread Guide Plate (L)	7	A-17	CUF-CB001900	Upper Feed Eccentric Wheel Crank	13	C-14
CLB-BQ000300	Oil Pipe For F-1	19	F-4-1	CMB-HK007300	Three Hole Thread Guide Plate	7	A-12	CUF-CB002000	Needle Bar Rock Crank	13	C-52
CLB-FZ000300	Oil Tank Packing	19	F-3	CMB-HK007400	Arm Thread Guide Plate(U)	7	A-13	CUF-CB002700	Needle Bar Rock Crank	23	H-45



# Index

Parts No.	Name of Parts	Page	Ref.No.	Parts No.	Name of Parts	Page	Ref.No.	Parts No.	Name of Parts	Page	Ref.No.
CUF-CC001500	Upper Feed Lifting Cam Lod	13	C-13	DSC-BA000100	Screw (9/64"n=40)	21	G-19-2	DSC-BJ005300	Screw (A) For C-44	13	C-45
CUF-CC001700	Connecting Rod For C-48	13	C-54	DSC-BA000100	Screw (9/64"n=40)	21	G-19-3	DSC-CA000300	Screw (3/16"n=28)	11	B-54
CUF-CC002100	Connecting Rod for C-48	23	H-44	DSC-BA000700	Screw (3/16"n=32)	7	A-41	DSC-CA000500	Screw (1/4"n=40)	9	B-35
CUF-CD000200	Walking Bar Guide Block	13	C-47	DSC-BA000700	Screw (3/16"n=32)	19	F-24	DSC-CA000500	Screw (1/4"n=40)	9	B-39
CUF-CR000100	Walking Bar	13	C-31	DSC-BA000900	Screw (9/64"n=40)	7	A-5	DSC-CA000800	Screw (15/64"n=28)	9	B-4
CUF-DC000400	Upper Feed Lifting Eccentric Cam	13	C-10	DSC-BA000900	Screw (9/64"n=40)	7	A-7	DSC-CA000800	Screw (15/64"n=28)	9	B-18
CUF-KF000300	Walking Foot Pressure Adjusting Pole	13	C-37	DSC-BA000900	Screw (9/64"n=40)	19	F-11	DSC-CA000800	Screw (15/64"n=28)	9	B-21
CUF-KZ000501	Upper Feed Driving Shaft	13	C-21	DSC-BA000900	Screw (9/64"n=40)	19	F-20	DSC-CA000800	Screw (15/64"n=28)	9	B-42
CUF-KZ000501	Washer For C-16	13	C-19	DSC-BA001000	Screw (11/64"n=40)	13	C-33	DSC-CA000800	Screw (15/64"n=28)	9	B-47
CUF-KZ000700	Upper Feed Lifting Adjusting Shaft	13	C-16	DSC-BA001000	Screw (11/64"n=40)	23	H-55	DSC-CA000800	Screw (15/64"n=28)	13	C-43
CUS-BN000100	Pully Ring	9	B-34	DSC-BA001000	Screw (11/64"n=40)	25	H-59	DSC-CA000800	Screw (15/64"n=28)	15	D-30
CUS-DA002100	Link Cam	9	B-9	DSC-BA001100	Screw (11/64"n=28)	13	C-46	DSC-CA000800	Screw (15/64"n=28)	17	E-5
CUS-DA003200	Link Cam	23	H-12	DSC-BA001600	Screw (3/16"n=32)	17	E-17	DSC-CA000800	Screw (A) for H-15	23	H-16
CUS-KC002000	Upper Shaft	9	B-8	DSC-BA001700	Screw (9/64"n=40)	15	D-48	DSC-CA000800	Screw (B) for H-15	23	H-17
DBS-DA022400	Bushing (L) For E-1	17	E-4	DSC-BB000700	Screw (1/8"n=44)	15	D-3	DSC-CA001100	Screw (1/4"n=40)	9	B-14
DBS-DA022900	Bushing (U) For E-1	17	E-2	DSC-BB000800	Screw (9/64"n=40)	7	A-35	DSC-CA001700	Screw (15/64"n=28)	9	B-45
DBS-DA023500	Upper Shaft Middle Bushing	9	B-20	DSC-BB000800	Screw (9/64"n=40)	7	A-37	DSC-CA001900	Screw (1/4"n=40)	9	B-15
DBS-DA023700	Lower Shaft Front Bushing	9	B-41	DSC-BB002000	Screw (9/64"n=40)	7	A-48	DSC-CA002100	Screw (9/32"n=28)	9	B-24
DBS-DA023800	Lower Shaft Rear Bushing	9	B-46	DSC-BB004300	Screw (X3.378n=36)	11	B-63	DSC-CA002100	Screw (B) for H-12	23	H-14
DBS-DA023900	Bushing For D-28	15	D-29	DSC-BB004300	Screw for H-29	23	H-30	DSC-CA004200	Screw (M10x1.25)	9	B-48-11
DBS-DA025000	Bushing For B-72	11	B-70	DSC-BB004400	Screw (M6x1.0)	21	G-13	DSC-CB000400	Screw (1/4"n=40)	9	B-29
DBS-DA025100	Feed Regulator Bushing	9	B-23	DSC-BB004500	Feed Lifter Stud	23	H-48	DSC-CB000400	Screw (1/4"n=40)	9	B-48-9
DBS-DA028200	Bushing for B-72	23	H-34	DSC-BC000800	Screw (3/16"n=28)	17	E-26	DSC-CB000400	Screw (1/4"n=40)	11	B-50
DBS-DB006100	Upper Shaft Front Bushing	9	B-17	DSC-BC000900	Screw (11/64"n=40)	7	A-32	DSC-CB000400	Screw (1/4"n=40)	11	B-69
DBS-DB006200	Front Bushing For C-21	13	C-22	DSC-BF000100	Screw for H-38	23	H-41	DSC-CB000500	Screw (15/64"n=28)	15	D-32
DBS-DB006300	Rear Bushing For C-21	13	C-24	DSC-BF000800	Screw (15/64"n=28)	9	B-36	DSC-CB000500	Screw (15/64"n=28)	15	D-46
DBS-DB006600	Guide Bush For Lower Shaft	7	A-39	DSC-BF000800	Screw (15/64"n=28)	15	D-24	DSC-CB000700	Screw (M5)	15	D-13
DBS-DB006700	Bushing For C-16	13	C-17	DSC-BF003100	Screw (11/64"n=40)	13	C-35	DSC-CB000700	Screw for H-53	23	H-57
DBS-DB007200	Hook Shaft Bushing	11	B-53	DSC-BF003100	Screw (11/64"n=40)	17	E-7	DSC-CB000900	Screw (15/64"n=28)	17	E-3
DCL-AA007200	Collar For B-17	9	B-38	DSC-BF003100	Screw (11/64"n=40)	17	E-24	DSC-CB001800	Screw (1/4"n=40)	9	B-28
DCL-AA007900	Collar For B-40	9	B-44	DSC-BF003100	Screw (11/64"n=40)	17	E-15	DSC-CB001800	Screw (1/4"n=40)	9	B-48-8
DCL-AA007900	Collar For D-28	15	D-31	DSC-BF003500	Screw (5/16"n=28)	13	C-39	DSC-CB001800	Screw (1/4"n=40)	11	B-68
DCL-BB002400	Link Cam Stopper Ring	9	B-16	DSC-BF003600	Screw (11/64"n=40)	7	A-9	DSC-CB002400	Screw (1/8"n=44)	7	A-40
DGR-AD001000	Lower Shaft Gear	9	B-49	DSC-BF003800	Screw (9/64"n=40)	17	E-9	DSC-CB002900	Screw (9/64"n=40)	19	F-15
DGR-AD001100	Rotary Hook Gear (Ass'y)	11	B-61	DSC-BF010100	Screw (11/64"n=40)	23	H-38	DSC-FA015600	Stud Screw For C-52	13	C-55
DGR-AD001200	Lower Shaft Gear	23	H-21	DSC-BF011500	Screw (9/32"n=28)	9	B-11	DSC-FA017200	Screw(Upper) For A-2	7	A-3
DGR-AD001300	Rotary Hook Gear (Ass'y)	23	H-28	DSC-BF014400	Screw (9/64"n=40)	15	D-51	DSC-FA017800	Stud Screw For D-43	15	D-44
DPK-CB001100	Rubber Cap	7	A-22	DSC-BG000200	Screw (5/16"n=24)	9	B-37	DSC-FA017900	Stud Screw For D-23	15	D-25
DPL-AA001001	Pully	9	B-33	DSC-BH000500	Screw (11/64"n=40)	21	G-19-5	DSC-FD000300	Screw For A-27	7	A-28
DPL-BA000500	Timing Belt Pulley (Up)	23	H-18	DSC-BJ000200	Screw (11/64"n=40)	7	A-50	DSC-FD001400	Stud Screw For E-29	17	E-30
DPL-BA000500	Timing Belt Pulley (Up)	9	B-26	DSC-BJ000200	Screw (11/64"n=40)	15	D-42	DSC-FD001500	Hinge Screw For E-32	17	E-36
DPL-BA000600	Safety Clutch Belt Pulley	9	B-48-1	DSC-BJ000300	Screw (9/64"n=40)	13	C-7	DSC-FF001900	Stud Screw For Connection Link	13	C-26
DPL-BA000600	Safety Clutch Belt Pulley	23	H-20	DSC-BJ000300	Screw (9/64"n=40)	17	E-38	DSC-FG002000	Roller Stud Screw	17	E-18
DPN-AA003800	Pin For D-49	15	D-52	DSC-BJ000300	Screw(9/64"n=40)	7	A-53	DSC-FG002100	Guide Shaft For Feed Rock Shaft	7	A-43
DPN-AA008801	Needle Bar Crank Shaft	9	B-12	DSC-BJ000400	Screw (11/64"n=40)	19	F-2	DSC-HA000700	Presser Adjusting Screw	17	E-33
DPN-AA013200	Hinge Pin for B-1	9	B-2	DSC-BJ000600	Screw (15/64"n=28)	13	C-53	DSC-HB002300	Hinge Pin For E-27	17	E-28
DPN-AA014800	Needle Bar Crank Shaft	23	H-15	DSC-BJ001300	Screw (/64"n=40)	7	A-16	DSC-HB002600	Support Pin For G-19-1	21	G-19-4
DPN-AA014900	Feed Lifter Stud Presser	23	H-49	DSC-BJ001300	Screw (9/64"n=40)	7	A-14	DSN-AA000400	Nut (15/64"n=28)	7	A-44
DPN-AB000300	Pin For C-49	13	C-50	DSC-BJ001300	Screw (9/64"n=40)	7	A-18	DSN-AA000400	Nut (15/64"n=28)	13	C-56
DPN-AB000400	Pin For E-20	17	E-21	DSC-BJ001300	Screw (9/64"n=40)	7	A-56	DSN-AA000500	Nut (1/4"n=40)	13	C-20
DPN-AD008500	Hinge Pin For C-40	13	C-41	DSC-BJ001400	Screw (9/64"n=40)	7	A-55	DSN-AA000500	Nut (1/4"n=40)	13	C-27
DPN-AD009100	Shaft For Feed Lifter	15	D-33	DSC-BJ001400	Screw (9/64"n=40)	11	B-58	DSN-AA000700	Nut (15/64"n=28)	7	A-11
DPN-AH000100	Pin For D-14	15	D-16	DSC-BJ001400	Screw (9/64"n=40)	15	D-38	DSN-AA002200	Nut (9/32"n=28)	9	B-25
DPN-AH000100	Stopper Pin For B-72	11	B-73	DSC-BJ001400	Screw for H-46	23	H-50	DSN-CZ000900	Nut For Feed Regulator	15	D-9
DPN-BC004100	Button For B-67	11	B-72	DSC-BJ001600	Screw (3/32"n=56)	7	A-20	DSP-AA006400	Spring For Feed Regulator	15	D-11
DPN-BC004800	Button for B-67	23	H-35	DSC-BJ002000	Screw For C-10	13	C-11	DSP-AA009400	walking Foot Pressure Spring	13	C-38
DPN-BC004900	Shaft for Opener Guide Block	23	H-25	DSC-BJ002000	Screw For D-21	15	D-22	DSP-AA009500	Return Spring For E-10	17	E-11
DSC-AA000700	Screw (1/4"n=28)	13	C-15	DSC-BJ002200	Screw (3/32"n=56)	13	C-3	DSP-AA009600	Safety Clutch Ball Spring	9	B-48-6
DSC-AA002800	Screw (3/16"n=32)	11	B-66	DSC-BJ003500	Screw For D-33	15	D-35	DSP-AA010200	Return Spring For B-72	11	B-71
DSC-AA002800	Screw for H-22	23	H-33	DSC-BJ003700	Screw (9/32"n=28)	9	B-10	DSP-AB004400	Return Spring For D-1	15	D-14
DSC-AA002900	Set Screw For 161	17	E-35	DSC-BJ003700	Screw (A) for H-12	23	H-13	DSP-AC005200	Return Spring For Q-18-4	21	G-18-9
DSC-AD000100	Bolt For A-27	7	A-29	DSC-BJ004300	Screw (9/64"n=4)	13	C-5	DSP-AC006000	Return Spring For E-29	17	E-31





